



DeepSight Toolkit

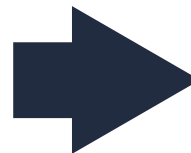
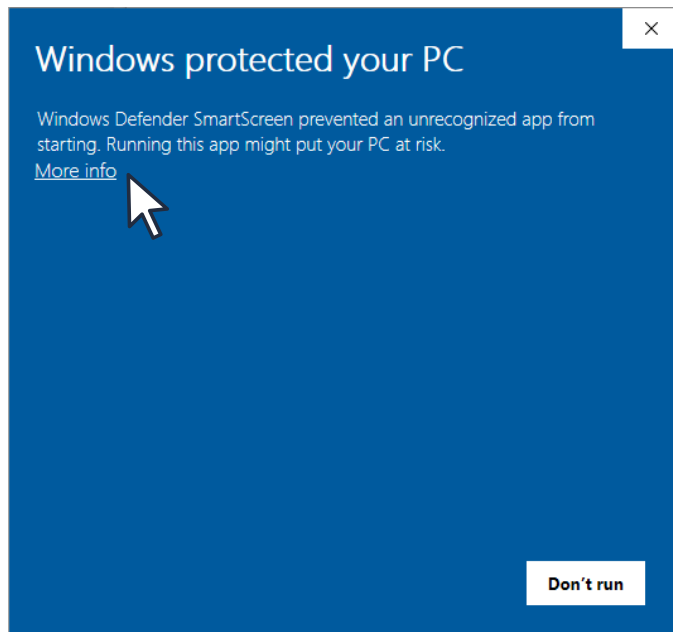
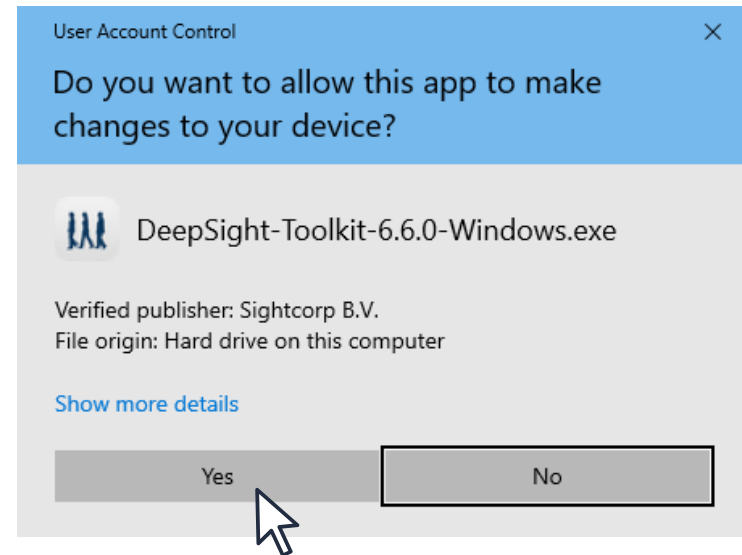
Quick Start Guide

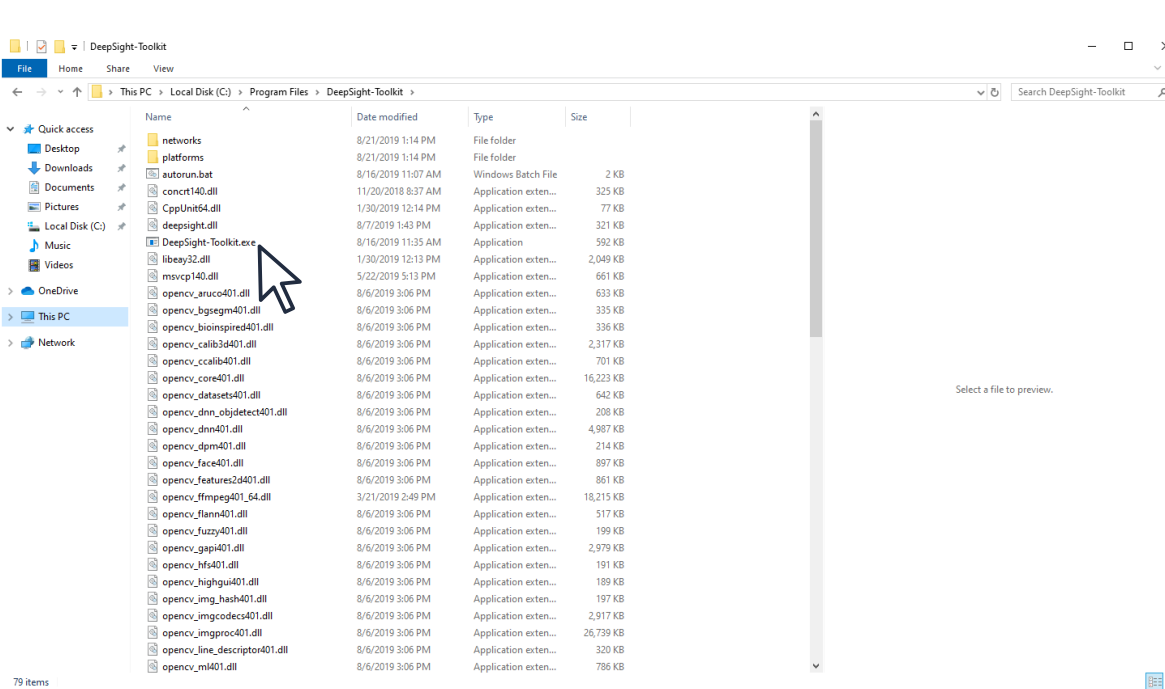
Windows

Welcome! This quick start guide will help you get the DeepSight Toolkit up and running in 4 easy steps.

STEP 1

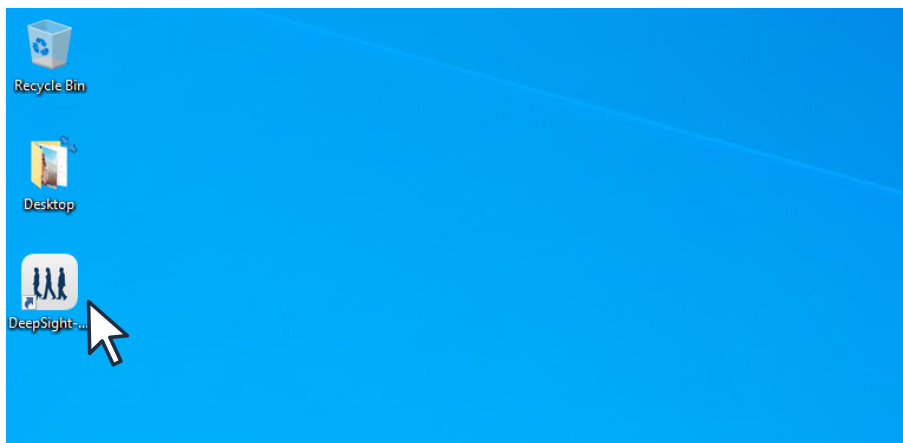
- Download the DeepSight Toolkit (see trial suite)
- For Windows devices, **please allow the app to make changes to your device** and run it





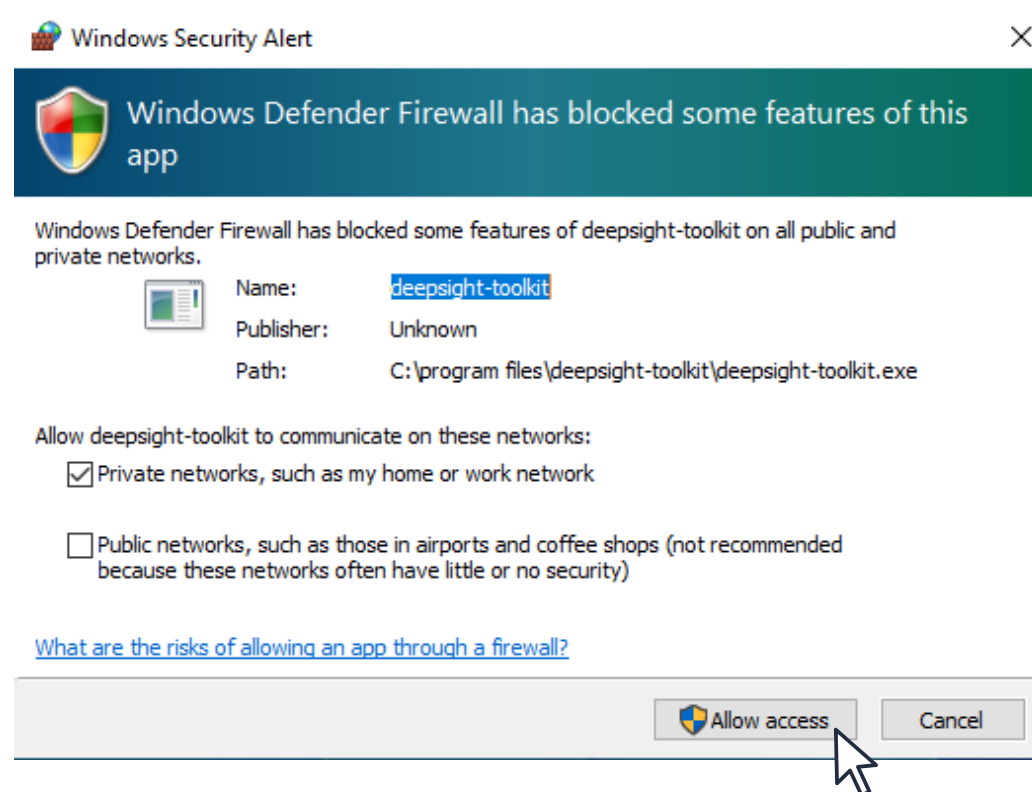
STEP 2

- You can now access your **application folder** and double click to activate and initialize the Toolkit



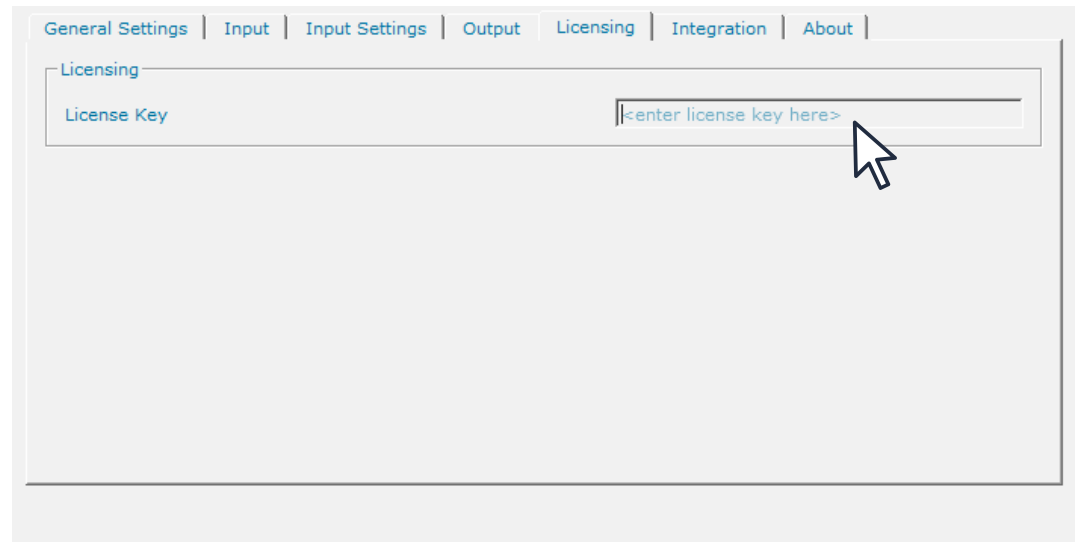
- A shortcut should also be found on your desktop by default

When opening the Toolkit for the first time you may be prompted by Windows Defender to allow or deny network access for it. Please click the '**Allow access**' button and check the first box, or both, depending on your use case.



STEP 3

- Insert your **license key** (see email) under the **Licensing Tab**.
- This trial license is valid for **14 days on two machines**.



The screenshot shows a web application interface with a navigation menu at the top containing the following tabs: General Settings, Input, Input Settings, Output, Licensing, Integration, and About. The 'Licensing' tab is currently selected. Below the navigation menu, there is a section titled 'Licensing' which contains a label 'License Key' and a text input field. The input field contains the placeholder text '<enter license key here>'. A mouse cursor is positioned over the input field, indicating that the user is about to enter the license key.

Congratulations!

You have completed *Phase 1* of the installation and are now ready to move onto *Phase 2*

Phase 1

Phase 2

POC

Roll-out

DeepSight Toolkit Best Practices

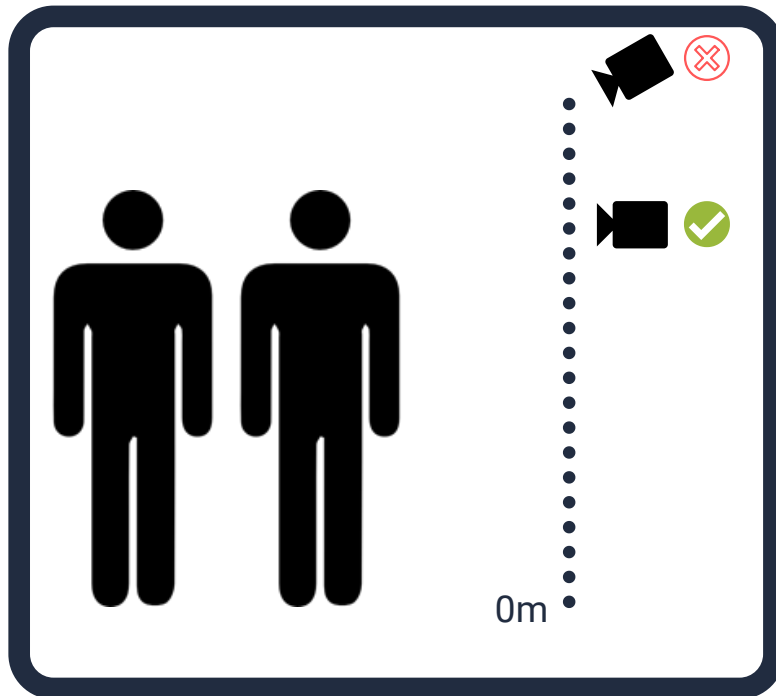
Phase 1

Phase 2

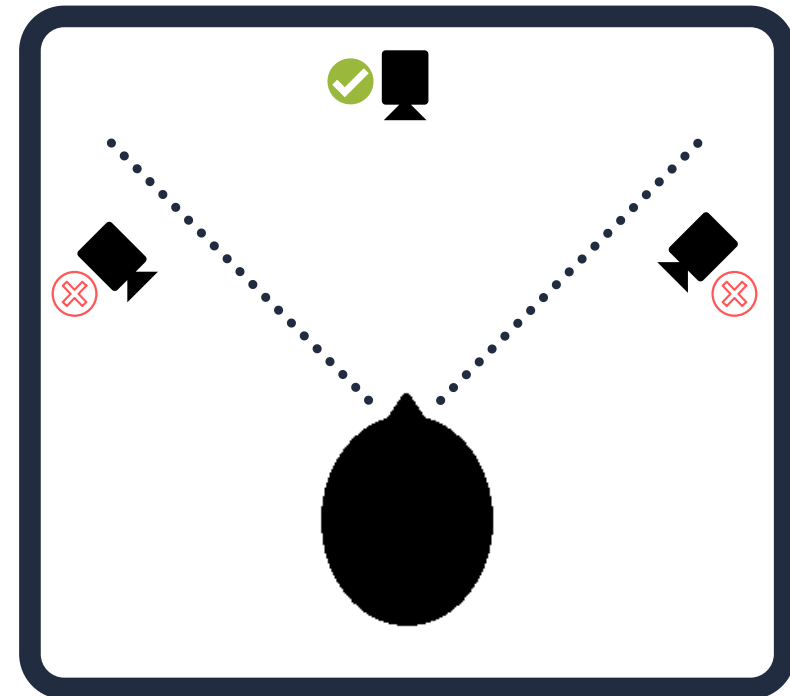
POC

Roll-out

The **camera** that you choose as well as its **positioning** both have a significant impact on the quality and accuracy of the results. The following diagrams highlight some best practices regarding camera positioning relative to the analyzed audience.



The camera should be placed as close to **eye-level** as possible.



The camera should be placed as **frontal** as possible to capture full frontal faces.

Check out the DeepSight Toolkit Manual

[CLICK HERE](#)

Phase 1

Phase 2

POC

Roll-out